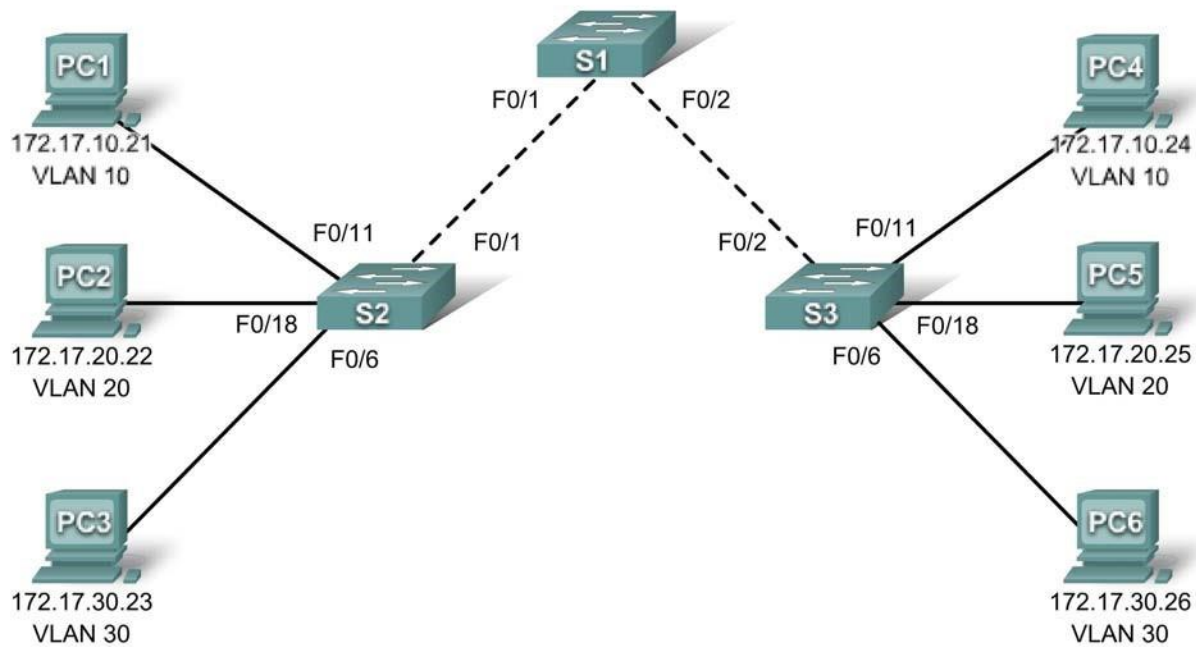


Felix Rohrer

## PT Activity 4.4.3: Troubleshooting the VTP Configuration

### Topology Diagram



### Addressing Table

Device	Interface	IP Address	Subnet Mask
S1	VLAN 99	172.17.99.11	255.255.255.0
S2	VLAN 99	172.17.99.12	255.255.255.0
S3	VLAN 99	172.17.99.13	255.255.255.0
PC1	NIC	172.17.10.21	255.255.255.0
PC2	NIC	172.17.20.22	255.255.255.0
PC3	NIC	172.17.30.23	255.255.255.0
PC4	NIC	172.17.10.24	255.255.255.0
PC5	NIC	172.17.20.25	255.255.255.0
PC6	NIC	172.17.30.26	255.255.255.0

## Port Assignments (S2 and S3)

Ports	Assignment	Network
Fa0/1 - 0/5	802.1q Trunks (Native VLAN 99)	172.17.99.0 /24
Fa0/6 - 0/10	VLAN 30 - Guest (Default)	172.17.30.0 /24
Fa0/11 - 0/17	VLAN 10 - Faculty/Staff	172.17.10.0 /24
Fa0/18 - 0/24	VLAN 20 – Students	172.17.20.0 /24

## Learning Objectives

- Find and correct all configuration errors.
- Document the corrected network.

## Introduction

The VLAN Trunking Protocol (VTP) helps ensure uniform VLAN configurations on your switched network, but it must be configured correctly. In this activity, the VTP domain name is **Lab4\_3**, and the VTP password is **cisco**. However, there are a number of errors in this configuration that you must troubleshoot and correct before end-to-end connectivity within the VLAN is restored. You will have successfully resolved all errors when the same VLANs are configured on all three switches, and you can ping between any two hosts in the same VLAN or between any two switches.

## Task 1: Troubleshoot and Correct VTP and Configuration Errors

When all errors are corrected, you should be able to ping PC4 from PC1, PC5 from PC2, and PC6 from PC3. You should also be able to ping the management interfaces on both S2 and S3 from S1. Use **cisco** for the user EXEC password and **class** for the privileged EXEC password.

## Task 2: Document the Switch Configuration

When you have completed your troubleshooting, capture the output of the **show run** command and save it to a text document for each switch.

Your completion should be 100%. If not, troubleshoot to correct any errors.

## Switch: S1

Building configuration...

Current configuration : 1756 bytes

```
!
version 12.2
no service timestamps log datetime msec
no service timestamps debug datetime msec
no service password-encryption
!
hostname S1
!
enable secret 5 $1$mERr$9cTjUIEqNGurQiFU.ZeCi1
!
!
!
no ip domain-lookup
!
spanning-tree mode pvst
!
interface FastEthernet0/1
 switchport trunk native vlan 99
 switchport mode trunk
!
interface FastEthernet0/2
 switchport trunk native vlan 99
 switchport mode trunk
!
interface FastEthernet0/3
 switchport trunk native vlan 99
 switchport mode trunk
 shutdown
!
interface FastEthernet0/4
 switchport trunk native vlan 99
 switchport mode trunk
 shutdown
!
interface FastEthernet0/5
 switchport trunk native vlan 99
 switchport mode trunk
 shutdown
!
interface FastEthernet0/6
 shutdown
!
interface FastEthernet0/7
 shutdown
!
interface FastEthernet0/8
 shutdown
!
interface FastEthernet0/9
 shutdown
!
interface FastEthernet0/10
 shutdown
!
interface FastEthernet0/11
 shutdown
!
interface FastEthernet0/12
 shutdown
!
interface FastEthernet0/13
 shutdown
!
interface FastEthernet0/14
 shutdown
!
interface FastEthernet0/15
 shutdown
!
interface FastEthernet0/16
 shutdown
```

```
!
interface FastEthernet0/17
 shutdown
!
interface FastEthernet0/18
 shutdown
!
interface FastEthernet0/19
 shutdown
!
interface FastEthernet0/20
 shutdown
!
interface FastEthernet0/21
 shutdown
!
interface FastEthernet0/22
 shutdown
!
interface FastEthernet0/23
 shutdown
!
interface FastEthernet0/24
 shutdown
!
interface GigabitEthernet1/1
 shutdown
!
interface GigabitEthernet1/2
 shutdown
!
interface Vlan1
 no ip address
 shutdown
!
interface Vlan99
 ip address 172.17.99.11 255.255.255.0
!
!
line con 0
 password cisco
 login
!
line vty 0
 no login
line vty 1 4
 password cisco
 login
line vty 5 15
 password cisco
 login
!
!
end
```

## Switch: S2

Building configuration...

Current configuration : 2484 bytes

```
!  
version 12.2  
no service timestamps log datetime msec  
no service timestamps debug datetime msec  
no service password-encryption  
!  
hostname S2  
!  
enable secret 5 $1$mERr$9cTjUIEqNGurQiFU.ZeCi1  
!  
!  
no ip domain-lookup  
!  
spanning-tree mode pvst  
!  
interface FastEthernet0/1  
  switchport trunk native vlan 99  
  switchport mode trunk  
!  
interface FastEthernet0/2  
  switchport trunk native vlan 99  
  switchport mode trunk  
!  
interface FastEthernet0/3  
  switchport trunk native vlan 99  
  switchport mode trunk  
!  
interface FastEthernet0/4  
  switchport trunk native vlan 99  
  switchport mode trunk  
!  
interface FastEthernet0/5  
  switchport trunk native vlan 99  
  switchport mode trunk  
!  
interface FastEthernet0/6  
  switchport access vlan 30  
  switchport mode access  
!  
interface FastEthernet0/7  
  switchport access vlan 30  
  switchport mode access  
!  
interface FastEthernet0/8  
  switchport access vlan 30  
  switchport mode access  
!  
interface FastEthernet0/9  
  switchport access vlan 30  
  switchport mode access  
!  
interface FastEthernet0/10  
  switchport access vlan 30  
  switchport mode access  
!  
interface FastEthernet0/11  
  switchport access vlan 10  
  switchport mode access  
!  
interface FastEthernet0/12  
  switchport access vlan 10  
  switchport mode access  
!  
interface FastEthernet0/13  
  switchport access vlan 10  
  switchport mode access  
!  
interface FastEthernet0/14  
  switchport access vlan 10  
  switchport mode access  
!  
interface FastEthernet0/15
```

```
  switchport access vlan 10  
  switchport mode access  
!  
interface FastEthernet0/16  
  switchport access vlan 10  
  switchport mode access  
!  
interface FastEthernet0/17  
  switchport access vlan 10  
  switchport mode access  
!  
interface FastEthernet0/18  
  switchport access vlan 20  
  switchport mode access  
!  
interface FastEthernet0/19  
  switchport access vlan 20  
  switchport mode access  
!  
interface FastEthernet0/20  
  switchport access vlan 20  
  switchport mode access  
!  
interface FastEthernet0/21  
  switchport access vlan 20  
  switchport mode access  
!  
interface FastEthernet0/22  
  switchport access vlan 20  
  switchport mode access  
!  
interface FastEthernet0/23  
  switchport access vlan 20  
  switchport mode access  
!  
interface FastEthernet0/24  
  switchport access vlan 20  
  switchport mode access  
!  
interface GigabitEthernet1/1  
  shutdown  
!  
interface GigabitEthernet1/2  
  shutdown  
!  
interface Vlan1  
  no ip address  
  shutdown  
!  
interface Vlan99  
  ip address 172.17.99.12 255.255.255.0  
!  
!  
line con 0  
  password cisco  
  login  
!  
line vty 0 4  
  password cisco  
  login  
line vty 5 15  
  password cisco  
  login  
!  
!  
end
```

## Switch: S3

Building configuration...

Current configuration : 2484 bytes

```
!
version 12.2
no service timestamps log datetime msec
no service timestamps debug datetime msec
no service password-encryption
!
hostname S3
!
enable secret 5 $1$mERr$9cTjUIEqNGurQiFU.ZeCi1
!
!
!
no ip domain-lookup
!
spanning-tree mode pvst
!
interface FastEthernet0/1
 switchport trunk native vlan 99
 switchport mode trunk
!
interface FastEthernet0/2
 switchport trunk native vlan 99
 switchport mode trunk
!
interface FastEthernet0/3
 switchport trunk native vlan 99
 switchport mode trunk
!
interface FastEthernet0/4
 switchport trunk native vlan 99
 switchport mode trunk
!
interface FastEthernet0/5
 switchport trunk native vlan 99
 switchport mode trunk
!
interface FastEthernet0/6
 switchport access vlan 30
 switchport mode access
!
interface FastEthernet0/7
 switchport access vlan 30
 switchport mode access
!
interface FastEthernet0/8
 switchport access vlan 30
 switchport mode access
!
interface FastEthernet0/9
 switchport access vlan 30
 switchport mode access
!
interface FastEthernet0/10
 switchport access vlan 30
 switchport mode access
!
interface FastEthernet0/11
 switchport access vlan 10
 switchport mode access
!
interface FastEthernet0/12
 switchport access vlan 10
 switchport mode access
!
interface FastEthernet0/13
 switchport access vlan 10
 switchport mode access
!
interface FastEthernet0/14
 switchport access vlan 10
 switchport mode access
!
```

```
interface FastEthernet0/15
 switchport access vlan 10
 switchport mode access
!
interface FastEthernet0/16
 switchport access vlan 10
 switchport mode access
!
interface FastEthernet0/17
 switchport access vlan 10
 switchport mode access
!
interface FastEthernet0/18
 switchport access vlan 20
 switchport mode access
!
interface FastEthernet0/19
 switchport access vlan 20
 switchport mode access
!
interface FastEthernet0/20
 switchport access vlan 20
 switchport mode access
!
interface FastEthernet0/21
 switchport access vlan 20
 switchport mode access
!
interface FastEthernet0/22
 switchport access vlan 20
 switchport mode access
!
interface FastEthernet0/23
 switchport access vlan 20
 switchport mode access
!
interface FastEthernet0/24
 switchport access vlan 20
 switchport mode access
!
interface GigabitEthernet1/1
 shutdown
!
interface GigabitEthernet1/2
 shutdown
!
interface Vlan1
 no ip address
 shutdown
!
interface Vlan99
 ip address 172.17.99.13 255.255.255.0
!
!
line con 0
 password cisco
 login
!
line vty 0 4
 password cisco
 login
line vty 5 15
 password cisco
 login
!
!
end
```